

7. FINAL POINTS TO REMEMBER

- Check all fasteners periodically to see if they are tight
- If the wheelchair with this back support are used for a seat during transportation that a risk assessment is carried out, if required.
- Check that the user and/or carers are aware of any changes (or possible changes) to the handling or stability of the wheelchair with the addition of this new back support.
- Check that the back support can be removed and replaced easily from its mounting brackets.
- Check that this Guide is issued and understood by the user and/or carers.

SERVICE CONTACT DETAILS:

SUPPLIED BY: _____

DATE SUPPLIED: _____

TELEPHONE NUMBER: _____



USER GUIDE

The Matrix Total Contouring Back Support, MX^B



1. IMPORTANT NOTE:

The user of this equipment, including carers and professionals who may adjust and handle it, must read this Guide. This Guide contains important information about the use and application of the Total Contouring Back Support, MX^B, and because of the clinical and safety ramifications of misuse, injury to the user or others could result if you are unclear about how it works. Please keep this Guide to refer to later.

Matrix Seating Limited (MSL) accepts no liability from mis-application of this product.

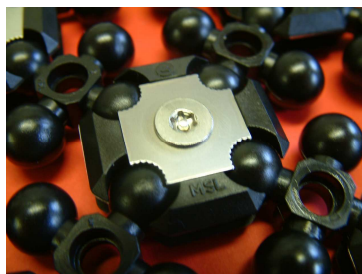
2. SAFETY REMINDERS AND WARNINGS:

2.1 CLINICAL:

- ✓ Only a Qualified Professional should assess and supply this Total Contouring Back Support, MX^B.
- ✓ Ensure that the correct size of MX^B has been selected and the device is not positioned too high (lateral supports can cause axilla pressure injuries).
- ✓ Everyone involved with the client's care should monitor skin condition especially during the initial stages when support tolerance is being increased.
- ✗ Do not make adjustments that are not clinically authorised.

2.2 MECHANICAL:

- ✗ Under no circumstances should the central clamp screw (with the square stainless steel top washer) be adjusted by the user. The corrective shape and structural integrity of the Matrix Shell will be adversely affected by adjusting or loosening of any of these screws.
- ✓ Check, inspect (for wear and tear to maintain structural integrity) and tighten as necessary, the completed MX^B once a year for adults and every six months for children.
- ✗ Watch out for situations that may, in combination, require more frequent service intervals than those mentioned above.
- ✓ For very large clients, or those exhibiting high extensor tone or regular extensor spasm, the MX^B may need to be reinforced



5.1. V-TRAK SYSTEM

Fit the V-Trak system according to the V-Trak Installation Manual (published by Performance Health Products Limited and supplied with this User Guide).

5.2. MATRIX SHELL

The Matrix Total Contouring Back Support shell is available in three sizes, Small, Medium and Large, with a purpose made centrally hinged track (to which all the appropriate V-Trak components can be fitted). The professional fitting and delivering this equipment (who may also be the prescriber) will have already taken measurements from which a decision on size will have been made.

The Matrix shell is adjusted directly to fit by loosening the posi-drive stainless steel screw in the clamps where the quality of fit needs improvement or changed to obtain the support required. This is a skilled process and should not be undertaken by the user, carer or relatives. Please see the safety warning in Section 2.2 of this Guide.

6. REMOVING THE BACK SUPPORT

If the back needs removing for wheelchair folding or to lighten the dismantling process, see section 2.1 of the V-Trak manual for removing the complete Matrix Total Contouring Back Support (this is done by raising the locking levers, on both sides, with a hand under the outer end of each V-Trak ends, lifting the system evenly upwards – refit with the opposite procedure).

Velcro at the bottom rear of the Matrix Shell. The back fabric forms three cover pouches that fit the two lateral (side) supports and the top of the back. The open middle section of the cover allows for access to the central track of the V-Trak system.

4.2.1 Cover Washing: The Cover is made from open cell foam and the covering material is not waterproof.



The Matrix Shell Cover can be machine washed at low temperature, less than 40° C. Do not tumble the Matrix Shell Cover as the high temperature degrades the flame retardancy characteristics of the stretch cover and foam filling. A short spin cycle can be used followed by warm air drying.

Replacement and spare covers are available.

4.3. THE V-TRAK SYSTEM

Please see the V-Trak System's User Guide (supplied with this Guide, published by Performance Health Products Limited) for important information about this mounting hardware. See also sections 1.3, 2.1, and 2.2 in the V-Trak User Guide for fitting and removal of the complete MX^B system, Matrix Shell and V-Trak combination.

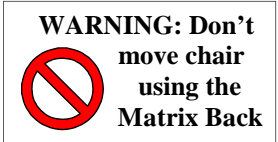
5. INSTALLATION

with Matrix Cladding, MX^C

- ☒ If the MX^B is dropped or the wheelchair falls over, visually inspect all clamps and 4-ball joints for damage or any changes to the delivered back shape. Replace damaged components and reshape as required. Check alignment/positioning/fitting/removal of V-Trak components and re-adjust as necessary.

2.3 ENVIRONMENTAL:

- ☑ Check that by fitting the MX^B to the wheelchair the stability and handling of the wheelchair has not been compromised. Take extra care when the system is positioned using extremes of the potential adjustment range.
- ☒ Do not use the MX^B or V-Trak components to push or steer the occupied or un-occupied wheelchair. This could cause mechanical damage and loss of correct position/shape of the MX^B and V-Trak (see Mechanical warnings above). A warning label (shown on right) is attached inside each of the upper and lower T-Track mounting hardware.
- ☑ The Matrix Shell Cover can be machine washed at low temperature, less than 40° C.
- ☒ Do not tumble the Matrix Shell Cover as the high temperature degrades the flame retardancy characteristics of the stretch cover and foam filling.



2.4 TRANSPORTATION:

If the wheelchair base with MX^B and V-Trak fitted are used during transportation then:

- ☑ To prevent head and neck injuries, fit a head support.
- ☑ Check the locking levers on the V-Trak system (both sides) are working and secure prior to transport
- ☑ The wheelchair base should be secured into the vehicle following the manufacturer's recommendations. Risk assess and follow any legal requirements or national guide-lines as appropriate. These include, in the UK, Leaflet VSE87/1 'The Safety of Passengers in Wheelchairs on Buses' published by the Department of Transport.
- ☑ Always use an approved three point shoulder and pelvic strap, securely, and appropriately (and at the correct height) attached to the vehicle.

3. INTRODUCTION

The combined MX^B and V-Trak system improves postural support whilst using a wheelchair. This combination allows the complex, semi-customised shaping capabilities of the Matrix Body Support System (using the MX², MX³ and MX⁴ versions) to be positioned with the V-Trak mounting system to give:

- Three dimensional, intimately fitting back contours, in a one piece unit
- An increase or reduction in effective seat depth
- Variable tilt of the backrest
- Removable system for wheelchair folding or weight reduction when lifting

4. HARDWARE

The Total Contouring Back Support, MX^B, can use MX², MX³

and MX⁴ sub-components, and consists of two main parts:

- The back support assembly (Matrix Body Support System, the Matrix Shell)
- The mounting components (V-Trak System)

Please refer to the Installation Manual and User Guide supplied (published by PHP Limited) for fitting and using the V-Trak mounting system. The rest of this Guide describes the Matrix Shell components of the MX^B.

4.1. PREFABRICATED MATRIX BACK (MATRIX SHELL)

The Matrix Total Contouring Back Support shell is made of two interconnected components, one of which – the clamp – has a central screw that the professional who fitted and delivered the MX^B will have shaped and tightened. The shape and hence the comfort and effectiveness is controlled by these clamps and it is very important that they should be adjusted by the professional who fitted and delivered the Matrix Shell (who also may be the prescriber).

4.2. THE MATRIX COVER

4.2.1 Cover Fitting: The Cover is fitted and removed using the

